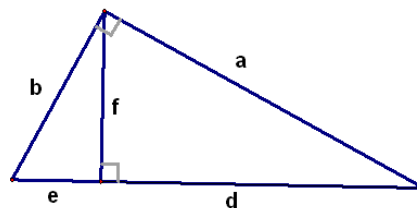
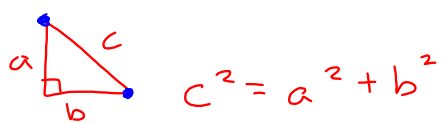


7.1 and 7.2 Quiz tomorrow

- 7.1
- Geometric Mean
- 7.2
- Pythagorean Theorem and Converse



$$\frac{e}{f} = \frac{f}{d} \quad \frac{c}{a} = \frac{a}{d} \quad \frac{c}{b} = \frac{b}{e}$$



$$c^2 = a^2 + b^2$$

$$c^2 = a^2 + b^2 \quad \text{Right}$$

$$c^2 > a^2 + b^2 \quad \text{Obtuse}$$

$$c^2 < a^2 + b^2 \quad \text{Acute}$$

$$d = \sqrt{(x_2 - x_1)^2 + (y_2 - y_1)^2}$$